

HIRE & RENTAL

AUSTRALASIA

Volume 3 Number 4 1982

Registered by Australia Post — Publication No. VBP3839

OFFICIAL JOURNAL OF THE HIRE ASSOCIATION OF AUSTRALIA AND HIRE SERVICES ASSOCIATION OF NEW ZEALAND INC.

HIRE '82' QUEENSTOWN NEW ZEALAND

5th ANNUAL CONVENTION
AND EQUIPMENT EXHIBITION



H. M. FOGARTY LTD
MILTON AND CHRISTCHURCH

WINTER IS CANCELLED. THE OHTA PORTABLE SUNSHINE PACKAGE.

A WORLD FIRST — Portable Infrared Kerosene Heating with Variable Combustion.

Space heating and drying instantly . . . anywhere . . . indoors, outdoors . . . for staff comfort, anti-damp protection, process drying . . ., the OHTA BRITE HEATER is your instant sunshine package with low-level fuel costings.

FEATURES:

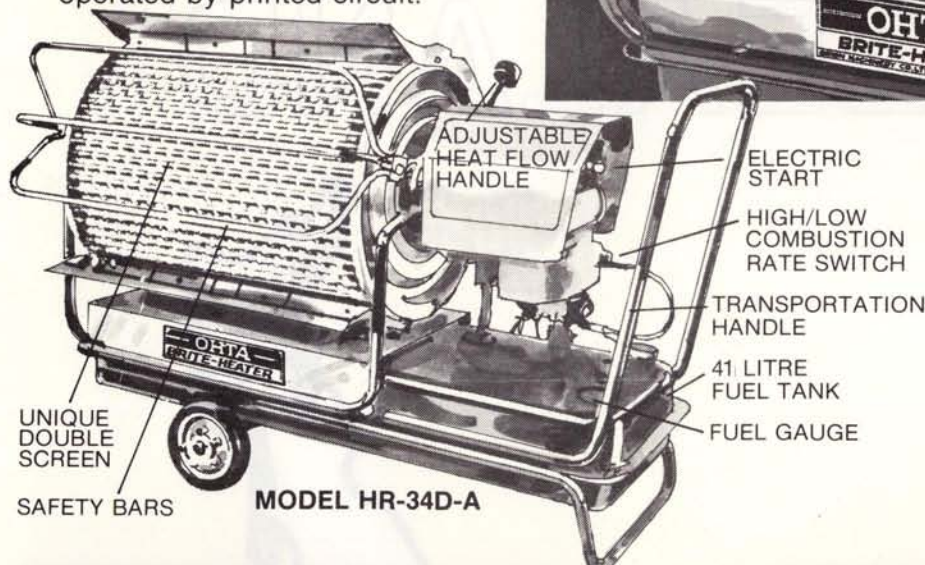
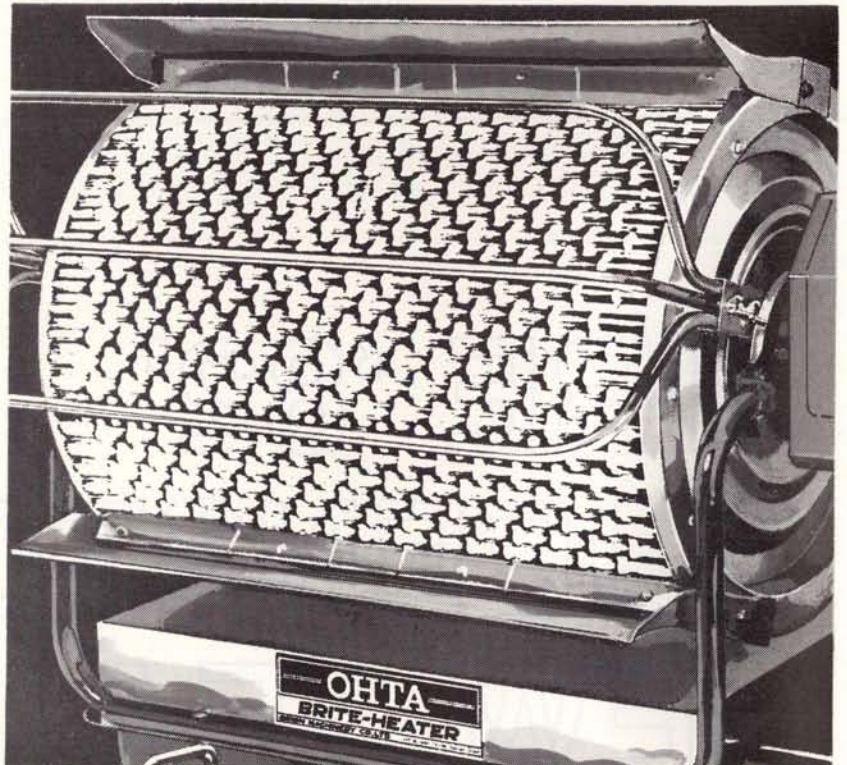
Portable — Trolley-mounted, easily transported, site it anywhere and just flick the switch.

Economical — From 96,000 BTU/hr at only \$1.43 per hour and no installation costs.

Versatile — Produces direct infrared radiant heat indoors or outdoors, enclosed premises, open areas, high-rise construction, direct heat applications.

Adjustable — Simple lever operation aims radiant heat directly through 30% elevation angle range.

Simple — Push-button start, two-position consumption switch, compact burner unit operated by printed circuit.



Economical and Powerful (Two major features) —

- Low Capacity** — ample for most general heating needs, delivers 96,000 BTU/hr at \$1.43 per hour.
- High Capacity** — for quick-drying or intense work conditions, produces 126,200 BTU/hr at \$1.88 per hour.

DISTRIBUTED THROUGHOUT AUSTRALIA BY HAROLD J. BEER

Distributed by I.E.P. Ltd, Auckland and Wellington; Hoist & Machinery Ltd, Christchurch; and Cory Wright & Salmon branches throughout New Zealand.

N.Z. MASTER AGENTS
H. M. FOGARTY LTD.
AUCKLAND AND CHRISTCHURCH

H. M. FOGARTY LTD, Box 37-445, Parnell, Auckland or Box 1142, Christchurch.

- Please supply further information on the OHTA Brite Heater
- Please contact concerning a free no-obligation demonstration

Name

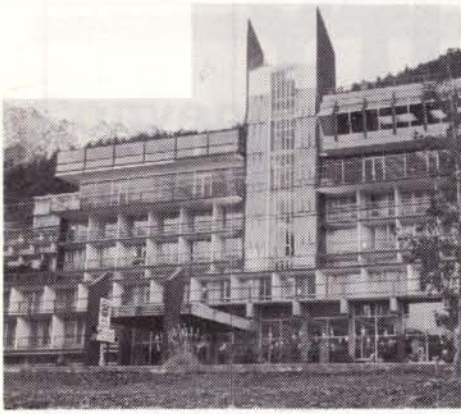
Company or Organisation

Address

Address

Telephone

TK/F8297B



• Lakeland Inn, Queenstown.

HIRE '82' 5th Hire Convention & Equipment Exhibition

June 28 – July 2 1982

Convention programme.

Monday, June 28

Monday is registration day.

Registrations

2.00 p.m. to 6.00 p.m.

Cocktail Hour

6.00 p.m.

Dinner

7.30 p.m.

Relax and meet old friends!

Tuesday, June 29

Opening Ceremony

9.00 a.m.

Keynote Speaker

9 – 10 a.m.

Seminar Speaker – Geoff Barton

9.30 a.m.

Ladies Tour

9.30 a.m.

A Scenic tour to Arrowtown by coach.

Lunch

12.00 noon

Luncheon served in the Equipment Exhibition area.

Seminar Speaker – Geoff Barton

1.30 p.m.

Equipment Exhibition

3.00 p.m.

Cocktail Hour

5.30 p.m.

Dinner

7.00 p.m.

(Optional extra to programme.)

Travel by Gondola to the beautiful Skyline Chalet for an evening of dining and entertainment.

Welcome to Queenstown

"What could be more pleasurable for me than to say a warm 'Hello' to all the hire people who will be travelling from all over New Zealand and of course, a special welcome to our overseas guests to our Fifth Convention in Queenstown.

The convention, held in an alpine setting, will be an exhilarating experience, but also relaxing in its tempo of speakers and functions. The warmth of hire-minded people getting together amongst themselves and with the equipment exhibitors to share their ideas and problems as past conventions show, puts a final seal on the setting.

Come on in and enjoy yourselves. You are very welcome."

*Peter Lawrence,
President,
Hire Services Association N.Z.*



Wednesday, June 30

Breakfast Open Forum

8.00 a.m.

Ladies Forum

9.00 a.m.

An Auckland expert on Silverware.

Annual General Meeting H.S.A.N.Z.

10.30 a.m.

Lunch

12.00 noon.

Luncheon served in the Equipment Exhibition Area.

Bus Tour

1.30 p.m.

Tour to Cromwell and Clyde dam site.

Evening Programme

6.00 p.m.

(Optional extra to programme.)

Indoor Barbeque dinner. Ice Skating and entertainment at Waterfall Park.

Thursday, July 1

General Business

9.00 a.m.

Open Forum

10.30 a.m.

Questions and answers from our Suppliers.

Lunch

12.00 noon.

Luncheon served in the Equipment Exhibition area.

Equipment Exhibition

12.00 noon

Cocktail Hour

6.00 p.m.

Annual Banquet

8.00 p.m.

Friday, July 2

7.30 a.m.

Full Day Tour

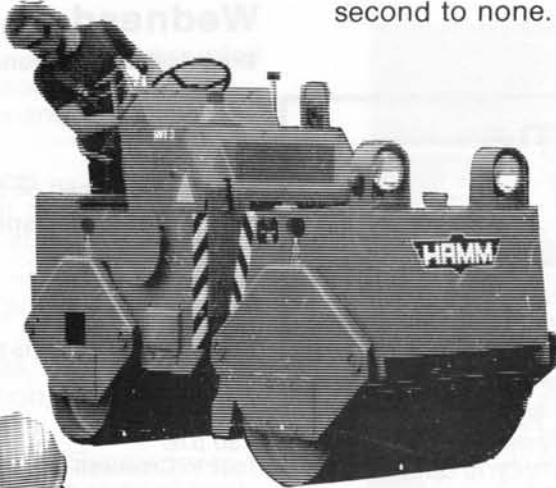
(Optional extra to programme.)

Day trip to Doubtful Sound, Wilmot Pass and the underground powerhouse at Supply Cove on Lake Manapouri.

DEPENDABILITY AND PROFITABILITY GO HAND IN HAND

When you count on dependability for profitability, you can count on Jesco Hydraulics.

Their range of compaction equipment includes models from some of the world's leading manufacturers and is designed and constructed with staying power, to perform reliably even under the toughest conditions. And remember, the Jesco back-up service is second to none.



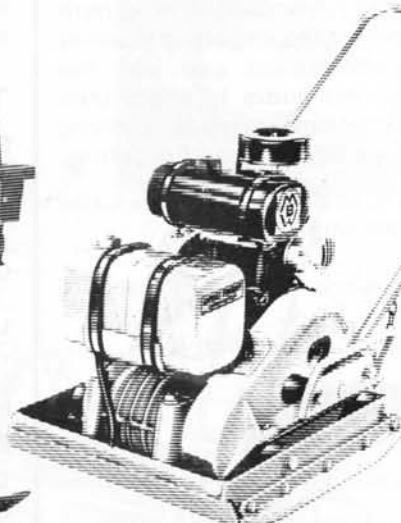
HAMM HVT3 Double vibratory all-wheel drive tandem roller.



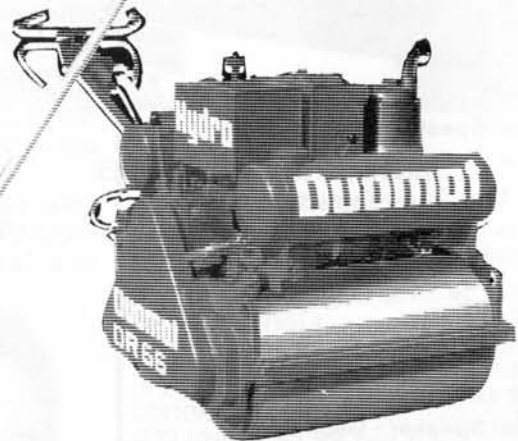
HAMM HVT2 vibrating tandem roller.



MBW Ground Pounder percussion rammer R270.



MBW Asphalt Pounder vibratory model AP2000.



DUOMAT DR66 double drum vibrating roller.

Dependability and
profitability go
hand in hand at



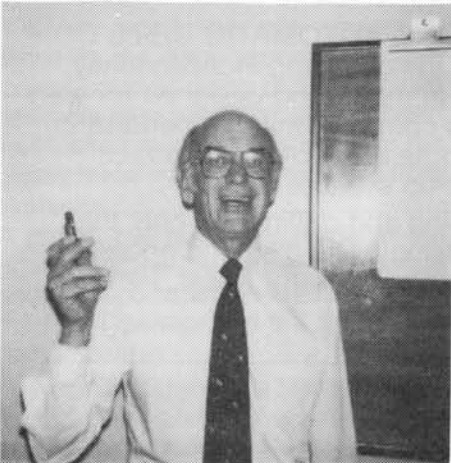
A DIVISION OF
J. JOHNSTON & SONS LIMITED
210 CLYDE STREET
INVERCARGILL
NEW ZEALAND
Phone: 87-044
P.O. Box 47
Telex: NZ4923

Convention Speakers

Keynote speaker Geoff Barton will lead both the morning and afternoon Seminar Sessions of Tuesday's programme on the theme — Success with People.

Success with people

- i the right mental attitude for success.*
- ii In depth Communications with people and body language*
- iii Marketing in Modern Business.*



Geoff Barton, Managing Director of Geoff Barton & Associates Ltd. as born in England. From University he went into the RAF where he flew spitfires and later spent a short period with Coastal Command. On leaving the RAF he started as a salesman with a well-known oil company and rose to an executive position. Afterwards he became a Marketing Manager in the to-

bacco industry, a General Manager in the textile industry and a Senior Management Consultant with an International Company.

Prior to starting his own Management Consulting Business, he was Market Development Manager of UEB Industries Ltd., responsible for development and training in the marketing, management, sales management and sales areas in New Zealand and Australia.

Geoff has worked in Great Britain, Canada, the United States of America, Australia, and has lived in New Zealand for the past 26 years. More than 25,000 salesmen have completed his training programmes, and over 60,000 people have now participated in his seminars and programmes of all types.

He is an avid reader, but obtains relaxation with many out-door activities including trout fishing and deer farming.

EXHIBITORS

- Atlas Copco (NZ) Ltd.
- Clyde Industries Ltd.
- Compaction Equipment Ltd.
- Compair (NZ) Ltd.
- Construction Machinery Ltd.
- Cory-Wright & Salmon Ltd.
- Crown Controls Ltd.
- Dalhoff & King Ltd.
- D.I.S. Industries Ltd.
- H. M. Fogarty Ltd.
- H. C. Grossman & Co. Ltd.
- Industrial & Electrical Products Ltd.
- Jesco Hydraulics Ltd.
- Kango Wolf International Ltd.
- Kerrick Distributors Ltd.
- Load-Lift Equipment Ltd.
- Lincoln Electric Ltd.
- Myles Walker Ltd.
- McKay Engineering Ltd.
- Morris Black & Matheson Ltd.
- C.B. Norwood Ltd.
- Ramset Fasteners (NZ) Ltd.
- Sullair (NZ) Ltd.
- Tradesman Products Ltd.
- Youngman, Richardson & Co. Ltd.



"Autonomous greetings from other world wide Associations to you, and conference assembled."

Who better could extend that greeting than Bill Cushing, who holds current association membership to the:

- American Rental Association
- California Rental Association
- Equipment Hire Association Ireland
- Hire Association Australia
- Hire Association Europe
- Hire Services Association New Zealand
- Japan Lease Association
- Pacific Rental Association
- Rental Association Canada
- Texas Rental Association.

Marguerite and Bill Cushing, Diablo Rental Inc. Pacheco, California, have a particularly successful Rental operation specializing in Refinery Maintenance, General Construction and Industrial Rentals.

COMING EVENTS

Conventions

Hire Association Australia
Surfers Paradise — August 31 - September 3, 1982

Canadian Rental Association
September 12 - 15, 1982

Californian Rental Association
October 26 - 29, 1982

Hirex London — '83
Wembley — January 25 - 27, 1983



DIAMOND. TRUMPS EVERYTHING.

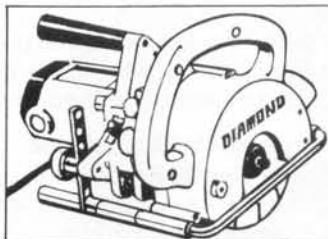
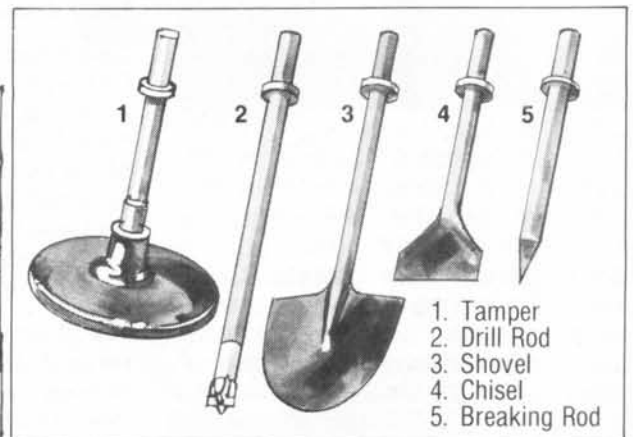


If there's a better, more economical way to get things done, Diamond have probably thought of it already.

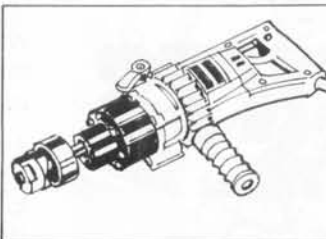
The Diamond range of power tools — rebar cutter, rebar bender, hand cutter, concrete channel cutter, engine floodlight, pipe bender, pipe cutter (straight cutter), reciprocating saw, structural steel punch, cable cutter, cleaning gun, covers every stage from foundations to the final floor.

DA20 DIAMOND AUTOMATIC DRILL AND BREAKER operating independently, with its built-in motor and designed for easy carrying, this compact unit can perform in the most remote areas of any contract, without back-up services.

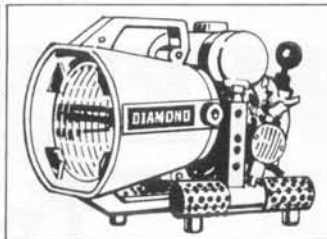
And breaking and drilling are only the beginning. Using basic diamond accessories, it becomes a one-operator driller, trencher, and tamper.



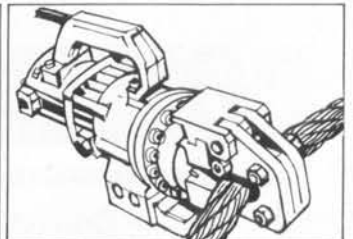
DTC 50 CONCRETE CHANNEL CUTTER. This convenient clean cutting machine is compact and lightweight. Ideal for any flat surface, it is easily handled even on walls.



EP 104 ELECTRIC PUNCHER. With enough power to penetrate steel sheets 3.2mm thick, this lightweight, compact puncher is perfect for switchboards and control boxes.



DE 07 DIAMOND ENGINE FLOODLIGHT. A lightweight, portable floodlight with a 2 stroke (1.2HP) engine, lights approximately three times the area of car headlights.



DCW 32 WIRE CUTTER. Capable of cutting wire rope 32mm in diameter this practical, portable wire cutter can be operated from virtually any position.

Distributed by I.E.P. Ltd, Auckland and Wellington; Hoist & Machinery Ltd, Christchurch; and Cory Wright & Salmon branches throughout New Zealand.

N.Z. MASTER AGENTS
H. M. FOGARTY LTD.
AUCKLAND AND CHRISTCHURCH

H.M. Fogarty Ltd, Box 37-445, Parnell, Auckland, or Box 1142, Christchurch

- Please supply further information on Diamond range of power tools
- Please arrange for a representative to call
- Please contact concerning a free no-obligation demonstration.

Name
Address
Company or Organisation Phone No.

Spare a Thought



Peter Lawrence

It is very nice to see new equipment arrive in the area especially if it is looked upon as being of a very hiring desirable nature and has already been well looked at in picture form from the glossy rental magazines received from overseas.

A phone call is usually made to the agent handling the desired equipment and an appointment is made between the Hire Operator and the agent for a demonstration.

The day and time of this blessed event duly arrives and the new item of equipment is off loaded out of the agent's van on to the floor of the hire yard. The person demonstrating the equipment launches into his prepared preamble as maybe a sale of one or several units is in the offing.

Questions are parried back and forth and leaflets full of statistics are produced. The agent waxes strongly as the hire operator plays with the new toy and negotiations for one or several of the units are made.

If we have been in the hire game for a while we can usually handle these over-enthusiastic demonstrations in

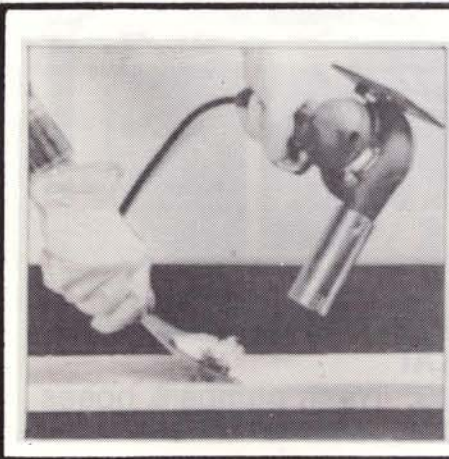
our inimitable way. We must listen carefully and note the salient points so the necessary questions can be asked and answered to our satisfaction.

But the most important of all is the back-up service of spare parts. There has been many a hire operator caught with buying several pieces of equipment only to find they are imported oncer's with little or no spare parts available, and he is left with one or a heard of white elephants occupying some important space on his shelves.

The question of spares must be well sounded out with the demonstrator very firmly, and even a phone call to the warehouse quoting part numbers of possible wearing parts would not go amiss. Sometimes one even has to make a toll call to that operator down the line who has already bought ten of these units and is making a bomb out of them. He may tell you that a certain part is failing on all of them, and he may not have bought them at all.

Let the hire operator beware when shopping in imported new equipment and then there will be no need to spare a thought at a later date.

Peter Lawrence



How To Strip Paint

One of the most popular uses of the Master Heat Gun is for stripping paint. It is especially useful indoors because it emits no poisonous, explosive fumes like liquid or paste paint removers, and it does not scorch wood surfaces like a butane blow torch.

Now available from:
Builders Aids Pty. Ltd.
P.O. Box 136, Bulleen, 3105.
Telephone (03) 850 2316

Circle 22 on Reader Service Card

SPECIFICATIONS

	XLR-1651	XLR-2400
Minimum and maximum platform height	1'3" - 15'	6'7" - 24'0"
Working Height	21'	30'
Platform Size	26" x 26"	26" x 26"
Base width and length	30" x 59"	30" W x 60" L
Capacity	400 Lbs	400 Lbs
Weight	640 Lbs	825 Lbs
Power Source (included)	One 12 Volt	One 12 volt Battery w/charger

EZYREACH WORK PLATFORMS

1076 Dandenong Road, Carnegie.
 Telephone: (03) 211 6729 **3163.**

Circle 23 on Reader Service Card

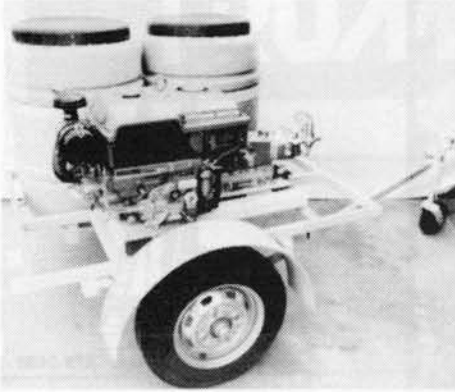
"A Muddy Miracle"

Flextool
 50 mm 212 Submersible Pump
 Flexible shaft drive
 Pumps mud, sludge, oil
 Totally self-priming
 Highly choke resistant
 No costly suction hose

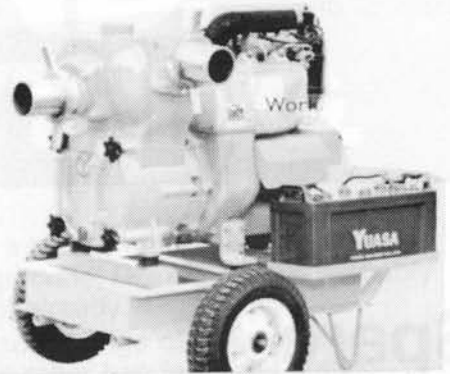
Designed and manufactured by
 Flextool (Aust.) Pty. Ltd.

Circle 123 on Reader Service Card

3000 POWER JET
"Kubota" diesel, Trailer unit.



CP117



TOKAI
4" DIESEL UNIT

Suppliers to the Hire Industry

- **Vibrators**
C.P. & Flextool
- **Rammers**
C.P., W. & J., Diamond
- **Compaction**
Taikyoku, Tradepack
- **Scabblers**
C.P.
- **Picks**
C. P., Diamond
- **Breakers**
C.P., W. & J., Diamond
- **Compressors**
C.P., Marquip
- **Pumps**
Tokai, Mono, Flextool, W. & J.
- **Saws**
Hitachi, C.P., W. & J.
- **Rebar Cutters**

Suppliers to:

Hire Services Association of N.Z.
Hire Association of Australia



Cory-Wright & Salmon Ltd.

P.O. Box 1230, Wellington.
Telephone: 85 6169
15 Branches throughout New Zealand



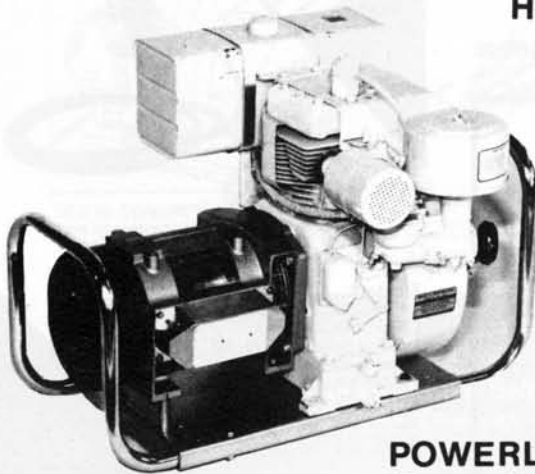
DIAMOND DA20



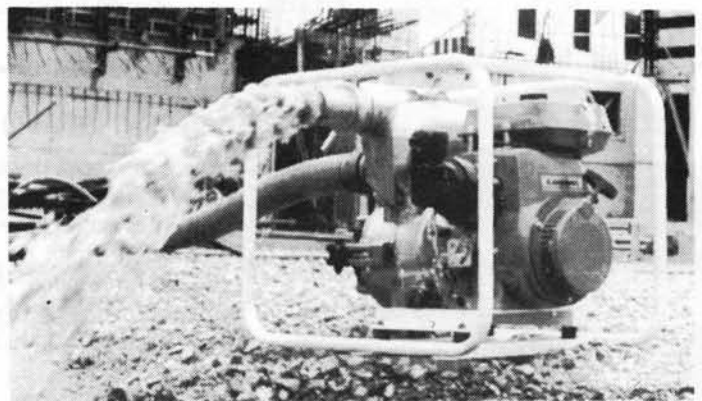
HITACHI TOOLS



C.P.9



POWERLITE
Generating Sets



TOKAI
2" & 3" Trash pumps & hoses

Just minutes, from chainsaw



to slicing steel.

Hire it out either way, as a Chainsaw or a CutQuik. With the Stihl 08S powerhead you can rent out either, and change one for the other in minutes. With power to slice through steel, concrete and asphalt as easily as hardwood. Plus you get all the West-German engineering and reliability that makes Stihl such a great, low-maintenance hire tool.

Stihl. The best selling chainsaws in the world.

Please send me by return your full-colour brochure on the CutQuik.

NAME

ADDRESS

CODE

STIHL®

STIHL CHAIN SAW (AUST.) PTY. LTD., 41 Barry Street, BAYSWATER, VIC. 3153. Tel: 7293522

N.S.W.: 99 Yerrick Road, LAKEMBA, N.S.W. 2195. Tel: 02/7598099

S.A.: 394 Main North Road, BLAIR ATHOL, S.A. 5084 Tel: 08/2603766 & 2603232

QLD.: 35 Allison St., MAYNE, QLD. 4006 Tel: 07/522021 TAS.: TAS. CHAINSAWS PTY. LTD. 210 Wellington Street, LAUNCESTON, 7250. Tel: (003)443141

DON McDOUGALL PTY. LTD. 34 Brisbane Street, HOBART, 7000. Tel: (002)344221

N.T.: AGSERV INDUSTRIES P.O. Box 39545, WINNELLIE, N.T. 5789. Tel: (089)843577

W.A.: W.A. CHAIN SAW (1980) PTY. LTD., 108 Burswood Rd., VICTORIA PARK, W.A. 6100. Tel: (09)3615444.

ST 73

Circle 100 Reader Service Card

ROVER

AUSTRALIAN MADE

THE FAIRWAY FLAIL

Model 18070. Australian designed and constructed for the world market. 80 hardened, tempered steel flails make short work of anything from golf course fairways to tall grass embankments. Powerful 7.5kW (10h.p.) engine, 5, adaptable forward gears, 1 reverse.

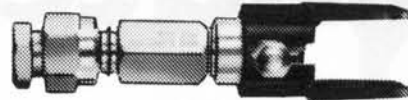


Please phone, call or write to: Rover Mowers (Aust.) Pty. Ltd.

VIC. (03)	543 3377	Q'LD (07)	268 2571
NSW (02)	642 0568	SA (08)	45 9011
TAS (003)	31 2282	WA (09)	361 6333

Circle 61 on Reader Service Card

SAVE on these tips-they're certain winners!



QUICK CHANGE TIPS:
Suitable for all airless spray guns.



TITAN TIPS – ADJUSTABLE:
Suitable for all airless spray guns.

We also have a range of standard airless flat tips at super saving prices.

WAGNER

●VIC: 556 Swan Street, Burnley, 3121. Phone: 428 3321
 ●NSW: 11 Fotheringham Lane, Marrickville, 2204. Phone: 519 2601.
 ●QLD: Unit M, 33 Curtin Avenue, Eagle Farm, 4007. Phone: 268 5357.
 ●WA: 15 Collyer Avenue, Osborne Park, 6017. Phone: 443 1373.
 ●NZ: 290 Wakefield Street, Wellington. Phone: 858 726
 Shop 2 - Southdown Market, cnr. Church Street & Industry Road, Penrose, Auckland. Phone: 595 297.

Circle 106 on Reader Service Card.



DRILL



PNEUMATIC TOOLS



GRINDER



SCREW COMPRESSOR

VITAL®

15 - 20 TON ¼ TON
HOISTS



PNEUMATIC
BREAKERS
AND AIR
HOISTS

MAGNA

SALES SPARES & SERVICE



POZIDRIV



PHILLIPS



TORX



TRI-WING



INDUSTRIAL & ELECTRICAL PRODUCTS LTD.

18 HEATHER STREET, PARNELL, AUCKLAND. PHONE: 794-980.

Circle 88 on Reader Service Card



New Model — 400AS Heavy Duty Diesel Welder

The new, improved model of the famous Shield-Arc 400AS on-site welder. Provides 400 amps DC plus 6kW of 240V AC auxiliary power. Faster and easier starting, and the fact that the auxiliary power can be used whilst welding, are only some of the upgraded specifications on this tough, reliable unit.

Lincoln welders, power sources, guns and electrodes.

LINCOLN
ELECTRIC

THE LINCOLN ELECTRIC COMPANY (AUSTRALIA) PTY. LTD.

35 Bryant Street, Padstow, Sydney, NSW 2211
Telephone: (02) 77 0741. Telex: 22792

Portable Welders/ 240V Power Sources — Five Models

A range of compact, easily handled engine driven welders with 240V auxiliary power facility. For repair work and light construction welding — see the Woldanpower and Lincwelder range. Optional undercarriages available.

Branches in every State. Dealers throughout Australia

Melbourne (03) 690 4911 Brisbane (07) 277 2955 Adelaide (08) 43 8061
Perth (09) 277 8744 Launceston (003) 26 3388 Townsville (077) 79 9777
Mackay (079) 51 1280 Newcastle (049) 61 5381 Wollongong (042) 28 0565
Karratha (W.A.) (091) 85 2405.

LE107 25 19 S&P

Circle 120 on Reader Service Card.

WALSH'S HOTEL-MOTEL EQUIPMENT



Plain White Commercial Crockery

- Stackable Tea Cup \$0.99
- Tea Saucer \$0.68
- 6½" Bread & Butter Plate \$0.92
- 9" Round Plate \$1.72
- 10" Round Plate \$2.28
- 9½" Oval Plate \$2.17
- 10½" Oval Plate \$2.97
- 11½" Oval Plate \$3.67
- 5¼" Sweet Bowl \$0.74
- 7" Soup Bowl \$1.36

WALSH'S HOTEL-MOTEL EQUIPMENT

73 Gertrude St, Fitzroy, 3065
Telephone (03) 419 6799

Circle 104 on Reader Service Card.

Reliable



2 stroke and 4 stroke petrol engines

The rugged, reliable Robin engine features:

- outstanding durability from selected materials combined with soundest design and engineering.
- range of models from 1 hp to 16 hp to suit every application.
- excellent after sales service.

Robin engines have diecast cylinders with cast-in micro-honed liners, dural connecting rods, precision forged steel crankshafts with induction hardened pins, shaved quality gears, heavy duty main ball bearings.

Reliable Robin petrol engines make the ideal choice for powering new machines, repowering old machines, and as a reliable power source for your every need.



Youngman,
Richardson & Co.

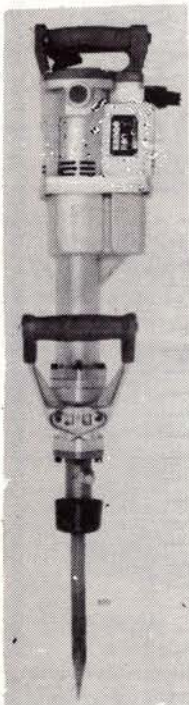
8A Goldfield St.,
GLENFIELD.
Phone 444 6028

Circle 16 on Reader Service Card.

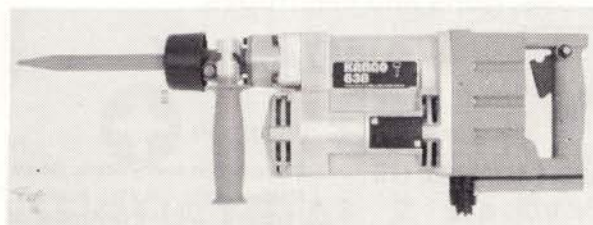
KANGO electric hammers

Check our Convention Specials on Complete Range of Kango Machines.

Kango Wolf Power Tools NZ Ltd.
1/10 Olive Road, Penrose, Auckland.
Telephone: 59 6135.



Kango 900
Demolition Hammer



Kango 638
Light Demolition Hammer



Kango 2500
Breaker

Circle 101 Reader Service Card

Briefly . . .

HANSW Meetings

The HANSW has programmed the following meetings.

July 27	Management Workshop
August 11	Committee Meeting
September 29	Yard Tour
October 13	Committee Meeting (Canberra)
October 20	Workshop Meeting
November 24	Committee Meeting

Scrapping or replacing plant

Before a taxation deduction can be allowed for the written down value of plant "scrapped" it must be really thrown out.

It should be taken to the tip or stripped to such a point that it is unusable.

Similarly, where the plant is disposed of for a profit, it may be worth applying the profit against the replacement item or other new item.

This depends on the taxable position at the time when the plant is sold. The profit can be carried forward for two years, so consider it carefully.

'Heat,' explained Rafferty to his friend Mulligan, 'makes things expand and cold makes them contract.'

Mulligan laughed with a sneer. 'You are entirely mad' he said. 'Who ever heard the like of that.'

'Well,' replied Rafferty, 'how do you account for the longer days in summer and the short ones in the winter?'

Kennards Expand

In acquiring Northern Hire, 48 Darley Street, Mona Vale, Kennards have expanded into the Warringah district of N.S.W.

ELECTRICAL CONNECTORS FOR TRAILER VEHICLES

The Standards Association of Australia has published a new edition of its standard dealing with electrical connectors for trailer vehicles.

AS 2513 was requested by motorist organizations and connector manufacturers in an attempt to rationalise the current situation in which a multiplicity of 5, 6 and 7 pin connectors are available, and even with physically interchangeable connectors, the numbered contacts are often used for different functions and/or connected by different coloured electrical connectors.

This standard specifies requirements for electrical connectors for private as well as commercial motor vehicle/trailers and incorporates a revision of AS D5 which covered commercial vehicles only.

Compliance with this standard will ensure that connector parts that are physically compatible are also functionally and electrically compatible and thus avoid unsafe situations such as lock-up of brakes or incorrect signals.

Copies of AS 2513 can be purchased from any SAA office at a cost \$7.20 plus \$1.50 postage and handling charge.

Don't Tip It, Chip It...

WITH AN A & N
CHIPPER SHREDDER
GRINDER

Turn Garden Waste into Compost or Mulch.



Ideal machine for the serious gardener, Nurseryman or Councils.

- * Fast and effective way of disposing of all your unwanted prunings.
- * Chips branches up to 76mm.
- * Ideal for making potting mixes.
- * Sieves soils.
- * Selection of screen sizes makes it very versatile, size range 6mm, 12mm, 19mm, 25mm, 50mm and 75mm bar screens also available.
- * Grinds pig and poultry foods.
- * Choice of engines.

Available from:

K & I Distributors Pty. Ltd.
136 Rooks Road,
Nunawading, 3131.
Telephone (03) 873 5563.

Manufacturers News

VERSATILE ROCK DRILL AND BREAKER

With its five rapid and efficient uses, the Diamond DA 20 Automatic Rock Drill and Breaker is one of the most versatile tools available to New Zealand contractors and construction engineers.

Drilling: The Diamond DA 20 carries its own integral 2 stroke engine and compressor which, together with its rotary shaft drive, permit a very fast drilling rate in both hard rock and concrete, drilling to a depth of one meter in only two minutes.

Breaking: Despite its extremely high performance rate of 2 cubic meters per hour even in concrete, the DA 20 is so light and well-balanced, and vibration free, that operator fatigue is reduced to an absolute minimum.

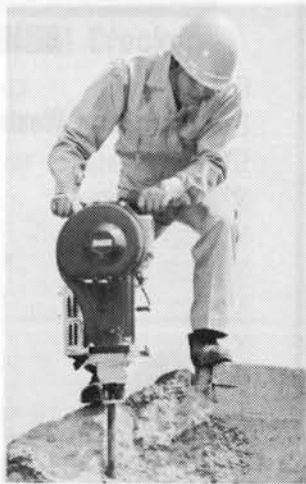
Cutting: Fitted with the optional asphalt cutting blade, the DA 20 converts to a truly portable cutter, achieving the high speed of 70cm/min.

Trenching: This machine is capable of digging fast, deep and accurate trenches at the incredible rate of 30m X 500mm per 8 hour day. Through hard clay or compacted fill, the DA 20's optional trenching shovel bites deep and clean.

Tamping: Equipped with the optional tamping attachment, the DA 20 is capable of compact tamping at a rate of 3 square meters per minute.

Full details are available H.M. Fogarty Limited, P.O. Box 37 160, Parnell, Auckland.

Circle 1 on Reader Service Card.



The Diamond DA 20 breaks up to 2m³/hr of hard rock or concrete.

REAR REBAR CUTTERS FROM DIAMOND

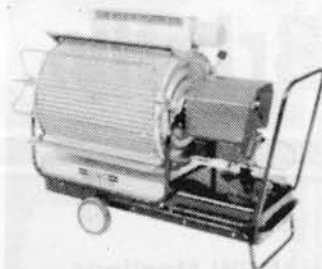
Smooth hydraulic pressure ranging from 10 to 45 tons depending on model, and created by a powerful electric motor, is used to cut reinforcing steel of up to 32mm diameter cleanly, efficiently and in just a few seconds, with the range of four electric Diamond rebar cutters, the DC13, DC20, DC25 and DC32.



VARIABLE RATE HEATER CHOPS ENERGY COSTS

The Ohta Brite-Heater, the world's first infrared kerosene heater with a variable combustion rate, is finding increasingly wide use in New Zealand since its introduction to the market last year.

It is being used mainly for heating large indoor areas such as workshops, factories, warehouses, engineering shops and assembly plants and by building and construction companies for rapidly curing new concrete work and for quick drying of interiors of new buildings. As the Ohta's infrared rays are not greatly wind-affected, it is also effective for outdoor use such as heating grandstands in sports stadiums and other similar applications.



Highly economical, on the low combustion rate setting the Ohta pours out an impressive 96,000 BTU/hr of heat for a kerosene consumption of 2.68 l/hr. On high setting the output leaps to 126,000 BTU/hr on only 3.52 l/hr.

The Ohta, which heats with a combination of infrared rays and convection, will provide instant heat at the flick of a switch and will operate a full 8 hour day, at maximum heat, on only 28.15 litres of kerosene at a cost of about \$15.06. For most practical heating and drying purposes, the low setting is adequate and on this setting, costs drop to a meagre \$11.47.

The Ohta is overload protected, has a heat flow directional adjustment of 30 degrees to aim the radiation directly at the object to be heated or dried, it incorporates an automatic solid state igniter, and is equipped with an integral fuel tank which holds 41 litres. An optional circulation blower is also available. With its low weight of 54kg and a pair of sturdy, rubber tyred wheels, it is completely mobile and easily handled by one person.

Being capital plant equipment, the Ohta qualifies for 25% depreciation as a tax deductible item in the first year.

For further information, please contact:

The sole New Zealand agents, H.M. Fogarty Limited P.O. Box 37 445, Parnell, Auckland. Phone 799 301, **Circle 5 on Reader Service Card.**

Three engine driven models, the DC19E, DC22E and DC29E, are also available, each with an integral 2 stroke engine of either 1.2 hp or 1.8 hp depending on model. These are ideal for on-site work, such as bridge building where no power supply is available. In all cases, the model number denotes the maximum cutting capacity of the unit for easy reference.

Each model offers optional, interchangeable cutting blades for different grades of metal and all are fully portable for use either on-site or on the production floor.

Full details of all Diamond construction equipment are available from the New Zealand master distributors, H.M. Fogarty Limited, Phone 799 301, P.O. Box 37 160, Parnell, Auckland.

Circle 2 on Reader Service Card.

The Diamond electro/hydraulic DC13 rebar cutter slices effortlessly through 13mm reinforcing steel.

DRY UP AND GET GOING!



SAKURAGAWA SUBMERSIBLE PUMPS

The compact solution to winter washouts and all de-watering work.

Features —

- Compact, portable and rugged.

Designed for easy operation in narrow and confined spaces, such as manholes, sewers and pits.

- Built-in auto-cut guards against motor damage from current variation, dry-running, or stalling of impeller.
- Impeller is finely balanced and resistant to abrasives in water.

Large channel design minimises potential clogging.

- No suction hose, foot valve or priming necessary. Simply fit discharge hose, immerse pump in liquid and switch on.
- Sturdy single phase motor, Class E. insulation (120°C).
- The ideal multi-purpose pump for the transmission and movement of liquids in storage and industrial situations.

Distributed by I.E.P. Ltd, Auckland and Wellington; Hoist & Machinery, Christchurch.

N.Z. MASTER AGENTS —
H. M. FOGARTY LTD,
AUCKLAND AND CHRISTCHURCH

H. M. Fogarty Ltd, Box 37-445, Parnell, Auckland, or Box 1142, Christchurch.

- Please supply further details on Sakuragawa Pumps
- Please arrange for a representative to call

Name

Address

Company or Organisation

Telephone

TK/F8297C

A breakthrough in road breakers



ZITEC the new name in pneumatic road-breakers. Quieter, lighter and easier to use than any road-breakers on the market.

Vibration and noise have been radically reduced by encasing the entire breaker in a steel tube, bonded into a non-conducting polyurethane sleeve. The old fashioned muffler has been replaced by incorporating a two-stage exhaust in the outer casing resulting in further noise reduction.

Designed, with the user in mind, ZITEC feature good weight distribution, soft plastic hand-grips to reduce the risk of 'white-finger' disease, T-Shaped handle suitable for right or left handed operators. Compair makes better machines simpler, less than 30 working parts and one spanner dismantles the machine.

ZITEC, quietly taking over the market.

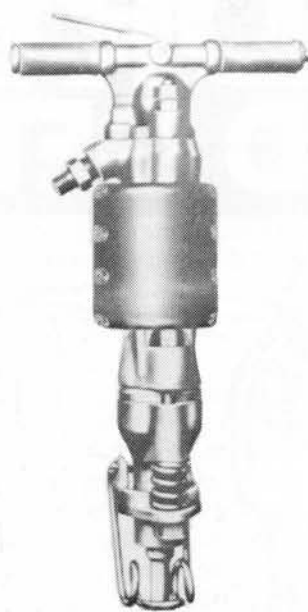
CompAir
CompAir (N.Z.) Ltd.

698 Great South Road, Penrose Phone 591-359, 598-502.
Aglionby Street, Lower Hutt Phone 661-168, 695-532.
13-17 Mandeville Street, Christchurch Phone 488-762.



NPW6685

Circle 109 on Reader Service Card.



Heavy Demolition Tools

CP117

The CP117 is a most popular demolition tool amongst construction and demolition squads. It has high hitting power and thus out performs any other tool in its class. This power to weight ratio is combined with excellent

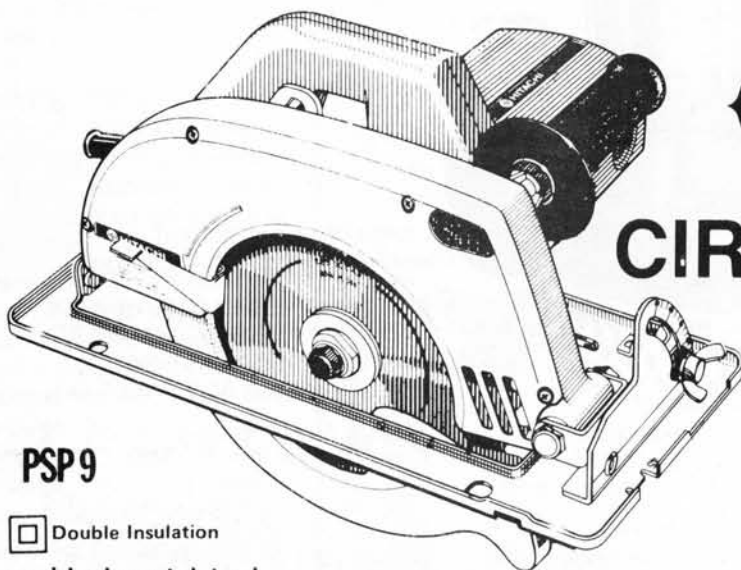
handling and minimum of operator recoil in operation, which ensures high operator efficiency due to a low fatigue factor. These factors make the CP117 an ideal tool for all types of demolition work with the breaking of large sections of concrete highlighting the tool's qualities.

Weight class 75 lbs 34 kg.

CP117S

As environmental protection has become more evident so therefore has the demand for silenced tools. To meet this demand a silenced CP117S is available with detachable muffler, allowing the tool to be used with or without muffler. The CP117S will conform to the recommendations in BS5228 1975, Code of Practice for Noise Control on Construction and Demolition Sites.

For further information: Cory Wright & Salmon Ltd. P.O. Box 1230, Wellington, or Circle 56 on Reader Service Card.



PSP9

Double Insulation
an ideal rental tool.

Available from:

Builders Aids Pty Ltd.

10 Manningham Road
P. O. Box 136 Bulleen 3105
Telephone (03) 850 2316



HITACHI CIRCULAR SAWS

Specifications PSP-9

Capacity:
Blade External Dia. 235 mm (9 1/4")
Blade Hole Dia. mm
35 and 25

Code No.
Washer (A) (B) Sat
500360

Max. Cutting Depth 84 mm (3 5/16")

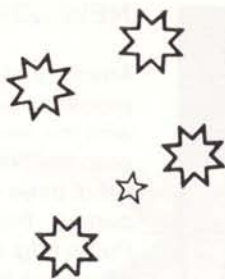
Power Input: 1,750 W
Power Output: 1,050 W
No-Load Speed: 3,900/min.
Full-Load Speed: 3,000/min.
Overall Length: 393 mm (15 1/2")
Weight: 7.3 kg (16.1 lbs.)
(Without Guide, Saw Flange, Side Handle)

Standard Accessories:
1 Combination Saw Blade, 2 Wrenches,
1 Guide.

HITACHI.PRECISION POWER.

Circle 89 Reader Service Card

HIRE ACTION SURFERS PARADISE 1982



**11th International
Hire convention &
Equipment exhibition**

**Chevron Paradise Hotel
Surfers Paradise
Australia.**

**AUGUST 31st to
SEPTEMBER 4th**

Programme

Tuesday, 31st August:

Registrations — Afternoon.
Delegates' Yard Tour
Ladies' and children's trip to Dreamworld.
Yard Tour to finish at Dreamworld.
Evening Cocktail Party to meet International guests and Sir John and Lady Moore.

Wednesday, 1st September:

Registrations.
9.00 a.m. — Opening speaker, the Hon. Sir John Moore, President of the Australian Conciliation and Arbitration Commission.
Speaker and Seminars to continue to Noon.
Trade Exhibition all afternoon.
Luncheon served in Exhibit area. Subsidised cash bar in Exhibit Area also Evening free in Surfers Paradise where the 'Fun Never Sets'.

Thursday, 2nd September:

Morning Speakers and Seminars.
Afternoon Trade Exhibition.
Subsidised cash bar and Luncheon in Exhibit Area 12.00 to 5.00.
8 p.m. — Luau Feast in Gardens.
Trade Exhibit re-opens at 8. p.m. to 9.00 p.m.



Friday, 3rd September

Keynote Speaker, 9 a.m., Mr. Alan M. Carroll, who needs no introduction to those who attended the 1981 Melbourne Convention or to those who listen to Alan on ABC Money Talk.

Speaker and Seminars continue till 12 Noon.

Afternoon Trade Exhibition and distribution of prizes.

7.00 p.m. to 1.00 a.m. — Convention Banquet and Wikety Wak Floor Show, (No Boring Banquet!).

This year "Australia's Zaniest Entertainers".

(Encore Magazine 10/81)

Remember:

Your full registration includes:
Cocktail Parties.
Yard Tour.
Dreamworld Tour.
All Seminars.
Luncheons and subsidised bar.
Banquet and Floorshow.

REGISTRATION FORM

Registrations Close 31st July, 1982.

Please complete by July 31st, 1982 and return with payment to —

Organising Committee,
Hire Association of Queensland,
John R. Lemare,
Riverside Shopping Centre,
Graceville Avenue,
GRACEVILLE, QLD. 4075.

Cheque made payable to —
Hire Association of Qld.

Delegate's Surname

Ladies Surname

Preferred First Names

Address

Phone

Company Name

Men's Registrations @ 200 ea. \$

Women's Registrations @ 150 ea. \$
Less 10% before July 31st.

Admission tickets, for functions you have indicated you will attend, will be included in your Convention kit. Please tick the appropriate boxes to secure your tickets.

Banquet & Floor Show

Cocktail Party No. 1

Cocktail Party No. 2

Luau Feast

Yard Tour

Visit to Dreamworld

Suppliers additional reps for Banquet and Wikety Wak — \$35.00 each.

SINGLE DAY REGISTRATIONS

Daily registration at \$80 per day \$

Additional from one Company \$60 per day.

TOTAL registration due \$

Accommodation deposit at \$50 per Adult (see form) \$

TOTAL ACCOUNT PAYABLE \$

Accommodation: Please complete the separate accommodation sheet and send direct to the above address. Accommodation will be confirmed.

ACCOMMODATION

ROOM ONLY

Please Tick

PARADISE ROOMS

Single \$50.00
Twin/Double \$64.00
Third Adult in Room \$12.00

TOWER ROOMS

Single \$62.00
Twin/Double \$80.00

TOWER SUITES

Single & Double \$105.00
Triple \$129.00
Each Additional Person \$14.00
(Suites Accommodate up to 5 persons)

PRESIDENTIAL SUITES — On Application Only

One Bedroom From \$150.00 to \$200.00
Two Bedroom From \$260.00 to \$280.00

CHILDREN (Under 15)

OCCUPYING SEPARATE ROOM

One Child Full Adult sole use rate
Two Children Full Adult twin/double rate
Third Child \$7.00

SHARING ROOM WITH PARENTS (From age 3-14)

Each child \$7.00
Cot Fee \$2.00

Please list all room occupants:

.....

.....

.....

.....

.....

.....

.....

.....

.....

.....

.....

.....

.....

.....

.....

.....

.....

.....

.....

.....

.....

.....

.....

FUJI CARRY Dumper

- Easy operation
- Loads & unloads in seconds – Sand – Rocks
Ready Mixed concrete etc.



USED BY:
CONTRACTORS,
PLUMBERS,
LANDSCAPE
GARDENERS,
COUNCILS,
GOVT. DEPT.

AUSTRALIAN DISTRIBUTOR:

POWERED MECHANICAL AIDS

P.O. Box 524, Frankston 3199

Phone: (059) 78-3211

INTERSTATE DEALERS:

NSW: METROTRACTOR SALES (02) 726-4396

S.A.: C.P. INDUSTRIAL EQUIP (08) 352 6822

TAS.: OUTDOOR POWER EQUIP (002) 28-5245

QLD.: BILL HERAGHTY 208-4669

W.A.: Dealer Required

N.T.: J. R. ROE (089) 84,4155

Circle 72 on Reader Service Card



MANG JR2000 ROTARY HOE

Every hire yard should have one!

**Mang is designed to provide high profit,
because Mang requires low maintenance.**

Built for professional use, Mang will
withstand amateur abuse.

ORDER NOW TO AVOID DISAPPOINTMENT.



A & N EQUIPMENT PTY. LTD.

19 Manton Road, South Oak-
leigh 3167
Telephone (03) 544 4066

Circle 69 on Reader Service Card

NEW LOW COST SUBMERSIBLE PUMPS

Anyone suffering dewatering problems will be delighted with the news of the release onto the New Zealand market of three new submersible pumps from Sakuragawa Pump Mfg. Co. Ltd. of Japan who have been in the business of manufacturing a wide range of submersibles for many years.

Marketed throughout New Zealand by H. M. Fogarty Limited of Parnell, Auckland, these pumps are exceptionally high quality, are economical, robust, compact, portable, and built for very hard work.

All three models are light-weight in comparison with their outputs. The U25L with a 40 mm discharge and the U40L with a 50 mm discharge weigh only 17 kg while the bigger volume U233K with an 80 mm discharge is 75 kg.

The compact, portable and rugged design makes these models highly functional, economical and easy to handle even while operating in narrow and confined spaces.

The heart of the pump, the impeller, is finely balanced and abrasion resistant and has a large channel to ensure freedom from clogging even when pumping semi-solids such as are found in cow shed effluent.

No suction hose, foot valve or priming are required as the pump is fully submerged in the liquid being pumped. Just fit the delivery discharge hose, immerse the unit in the liquid to be pumped, connect to the power supply and switch on for operating.

All models are fitted with an Auto-Cut recycling thermal protector to prevent electrical or thermal damage to the motor. This device operates automatically to protect the motor against abnormal conditions such as electrical current overload or voltage drop, temperature rise in the motor chamber due to dry running for long periods, or the stalling of the motor in the unlikely event of the impeller becoming clogged on solids.

Sakuragawa submersibles are guaranteed under normal warranty conditions for six months. They have wide applications in local body work and in many industries such as building construction, quarrying, farming, mining, irrigation etc. or in factories where liquids need to be transferred from place to place as part of the manufacturing process. H. M. Fogarty Limited are prepared to mount demonstrations on request and also advise that they would welcome enquiries regarding a limited number of distributorships which are available.

For further information, please contact:
Construction Equipment Division,
H.M. Fogarty Limited,
20 Heather Street, Parnell,
P.O. Box 37 445, Parnell,
Phone 799 301, Auckland.
Circle 3 on Reader Service Card.





MOBILE HYDRAULIC PLATFORMS

The Crown Series MHP: Mobile Hydraulic Platform is a light but robust platform designed to do those previously awkward and time consuming jobs with the minimum of effort and least expense.

Two working height models are available: Up to 10 metres with Model MHP10 and up to 12 metres with Model MHP12.

Both models offer a low travelling height and narrow width enabling the equipment to work in those tight spots other machines cannot.

The Crown Mobile Hydraulic Platform is practical and safe and enables one man to operate with complete mobility and versatility.

Further details contact
Crown Controls Ltd.
Auckland. Phone 274-4069
or **Circle 73 on Reader Service Card.**

British Progress in Hydraulics W & J Pacebraker

The W & J Pacebraker is a British built hydraulic concrete breaker which dramatically outperforms the pneumatics. It is compact, quiet, easy to handle and maintain and a real glutton for work.

It costs much less to buy, much less to run. It minimises traffic obstruction, reduces operator fatigue and increases productivity.

for further information:
CORY-WRIGHT & SALMON LTD
PO Box 1230 Wellington
Telephone 72 2324



Hire Association of Australia,
60-62 York Street,
Sydney, 2000

President: Ron Williams (03) 211 9488
Secretary: Rolf Schufft (02) 290 0700

**Hire Services Association of
New Zealand**

P.O. Box 2126, Christchurch
President: Peter Lawrence (09) 69 9740
Secretary: Jim Roberts (03) 69 741

REGION 2

The Hire Association of N.S.W.
P.O. Box 129, Beecroft, 2119
President: Garry Butler (02) 546 2202
Executive Director: Denise Layton (02) 848 9817

REGION 3

Victorian Hire and Rental Association
c/- 1347 North Road, Huntingdale 3166
President: Brian Elms (03) 850 2316
Secretary: Des Whelan (03) 543 2455

REGION 4

The Hire Association of Queensland c/-
39 Caswell Street, East Brisbane 4169
President: Arthur Staines (07) 391 5666
Secretary: Carol Staines (07) 391 5666

REGION 5

**The Hire Association of S.A. 44 Lambert
Avenue, West Lake Shore 5020.**
President: Neil Hallett (08) 336 2478
Secretary: Miss J. Hallett (08) 49 3965

REGION 6

**The Hire Association of WA c/- 53
Catherine Street, Morley 6062**
President: Des Brealey (09) 277 1944
Secretary: Alan Griffith (09) 275 4522

Published by:
RENTAL INDUSTRY PUBLICATIONS
10 Manningham Road,
Bulleen, 3105, Australia.
Telephone: (03) 850 5878

All advertising bookings and correspondence should be directed to:
Brian Elms, c/- Box 136,
Bulleen, 3105, Australia.

EDITORIAL:
Editorial information is welcome and should reach us by the 15th of the month preceding the month of publication.

ADVERTISING:
Advertising copy, bromides, transparencies or color separations should reach us no later than the 10th of the month preceding the month of publication.

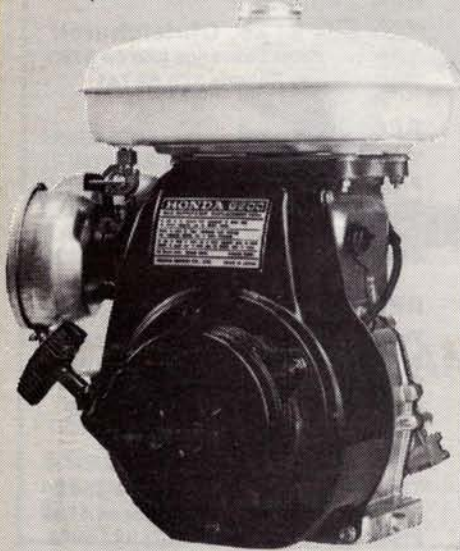
SUBSCRIPTION RATES:
Australia: \$15.00 for 11 issues

Overseas:
Seamail: \$A15.00 for 11 issues
Airmail: \$A30.00 for 11 issues

WHO SAYS WE CAN'T JUSTIFY THE EXTRA COST?

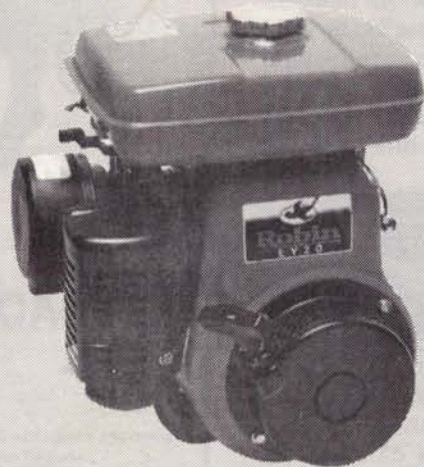
HONDA®

G200 (ENG. NO. 1692042)



Robin

EY20D (ENG. No. 103675)



**EXCLUSIVE
12 MONTH
REPLACEMENT ENGINE WARRANTY**
For further details contact
your local Robin Agent

ON STRIPPING THESE ENGINES DOWN WE FOUND THE FOLLOWING:

- | | |
|---|---|
| <ol style="list-style-type: none">1. Self tapping bolts used, no washers!2. Alloy camshaft with hollow steel spindle.3. Fuel filter situated at the bottom of the tank – no filter bowl in fuel tap.4. No replaceable carburettor seat.5. Plastic flywheel fan.6. Plastic choke and butterfly shaft.7. Muffler without heat shield.8. Governor operates off camshaft.9. Segment type lower oil ring.10. 6 month factory warranty on faulty manufactured parts. | <ol style="list-style-type: none">1. Threaded holes with bolts and spring washers.2. 'Solid Steel' camshaft with helical gear.3. Large filter in top of tank and filter bowl as standard fitting with fuel tap.4. Replaceable carburettor seat.5. All 'Cast Iron' Flywheel.6. Metal choke and butterfly shaft.7. Muffler with heat shield.8. Separate Governor gear.9. All solid cast oil ring.10. Full 12 MONTHS engine replacement warranty. |
|---|---|

We believe that with the use of quality parts such as the solid steel camshaft—the double fuel filter system—the solid cast oil ring—plus the many other features, the Robin engine will result in... (a) Longer life. (b) Less labour repair costs. (c) Less wear meaning longer maintenance of H.P. output.

For prices and leaflets, contact the Australian Factory Representatives, Crommelins Australia.

Brisbane,
Steve Anderson
Ph. 071 229 1690

Sydney,
Bob De Groot
Ph. 02 674 2152

Melbourne,
Kieth Holloway
Ph. 03 873 5594

Adelaide,
Ray Coustley
Ph. 08 353 5458

Perth,
Stan Bird
Ph. 09 451 6644

• SPARE PARTS AVAILABLE
AUSTRALIA WIDE.



**SIMPLY COMPARE THE
BENEFITS.**

No
Postage Stamp
required
if posted in
Australia

BUSINESS REPLY POST
(Permit No.7 Issued at BULLEEN)

Postage and fee will be paid on delivery to:

HIRE & RENTAL AUSTRALASIA

POST OFFICE BOX 136,

BULLEEN, 3105.

AUSTRALIA.

